

# Radiografiant el Mont de Conques

X.M. Pellicer, R. Linares, F. Gutiérrez, X. Comas, C. Roqué,  
D. Carbonel, M. Zarroca, J.A.P. Rodríguez



# Guió

- Doms de tova
  - Morfologia
  - Formació
- Geologia de la Conca
- Mètodes d'estudi
  - Resistivitat Elèctrica
  - Georadar
  - Trinxeres
- Resultats obtinguts
- Model geològic

# On/Com/Que són els doms de tova?

Tunísia



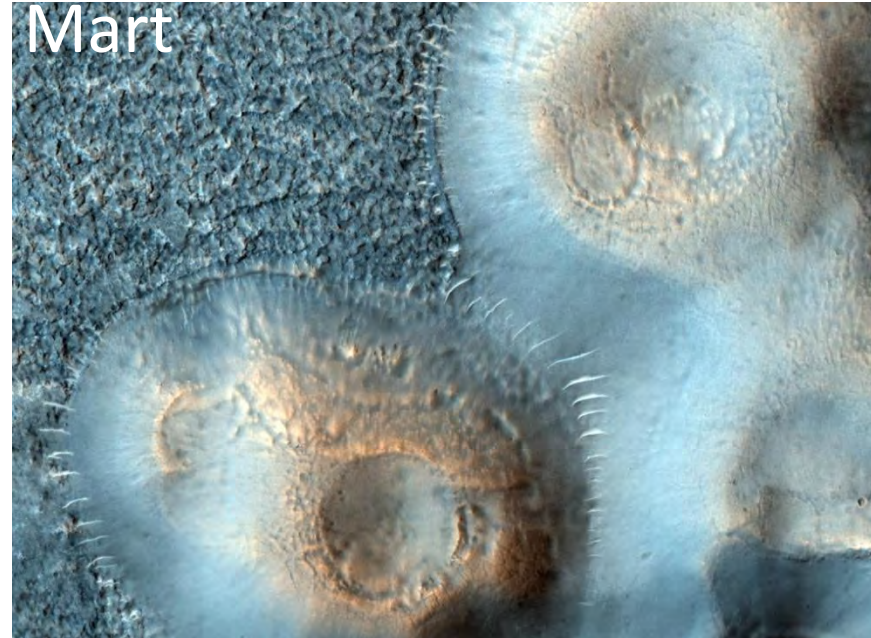
Austràlia



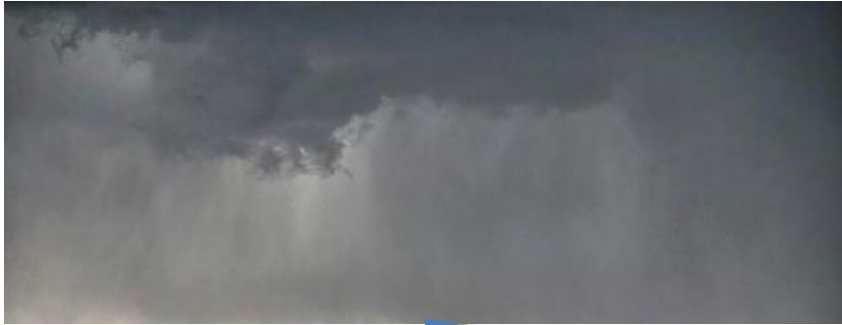
La Conca



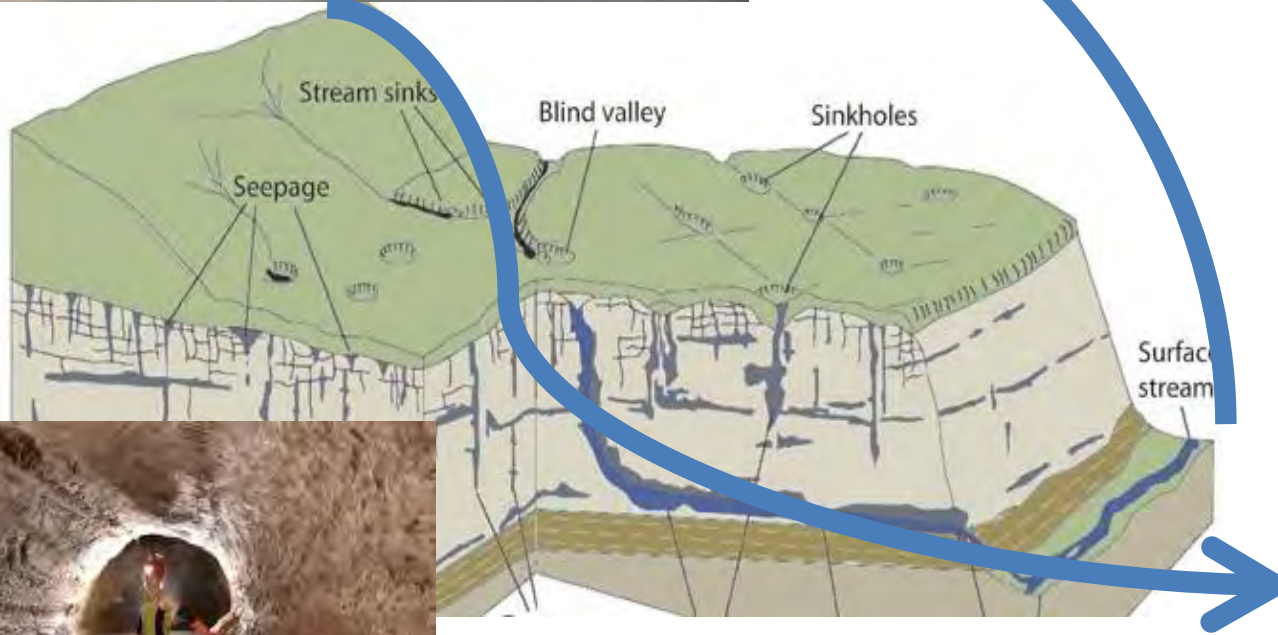
Mart



# Com es formen les toves



CO<sub>2</sub>



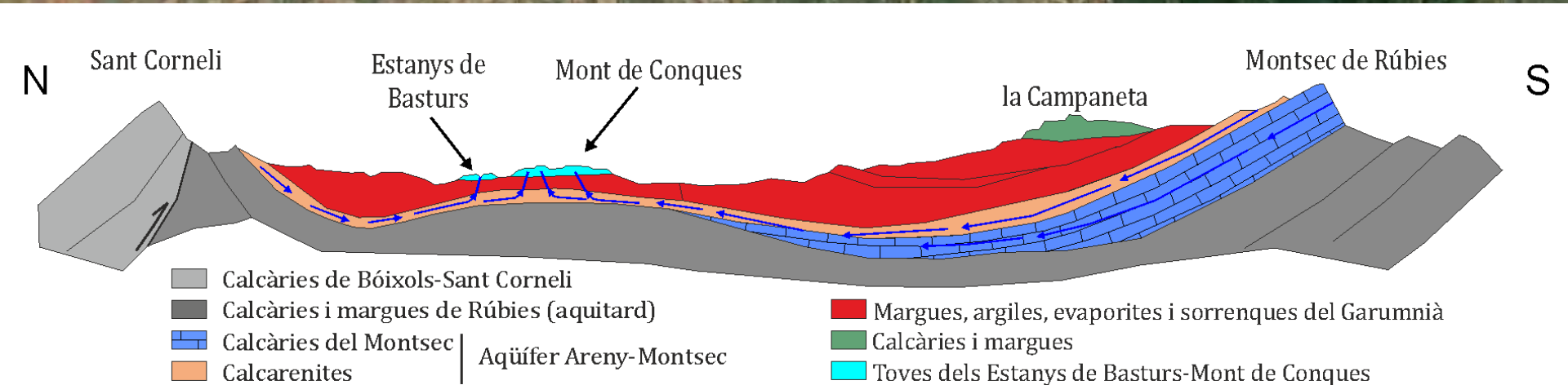
CaCO<sub>3</sub>



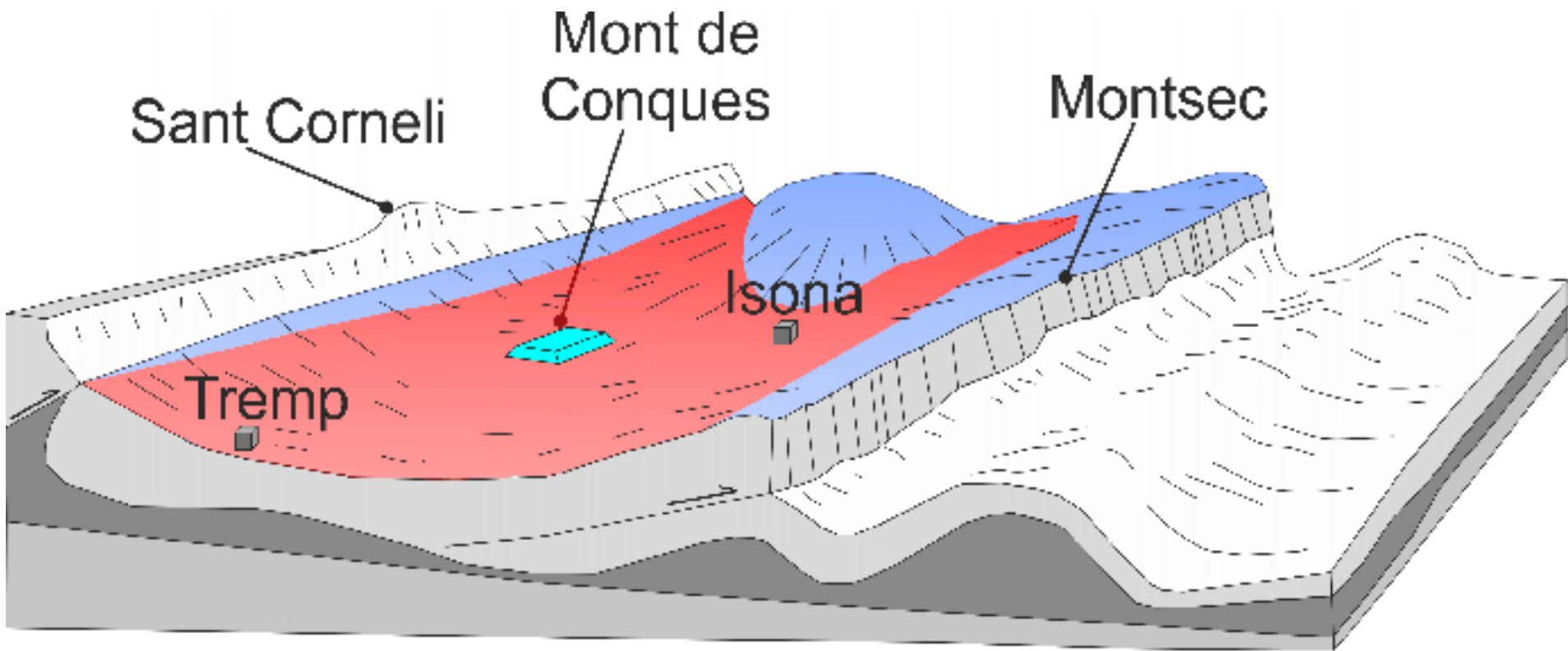
# Com es formen les toves



# Geologia de la Conca



# Hidrogeologia



Així doncs, com i quan es va formar  
el Mont de Conques?



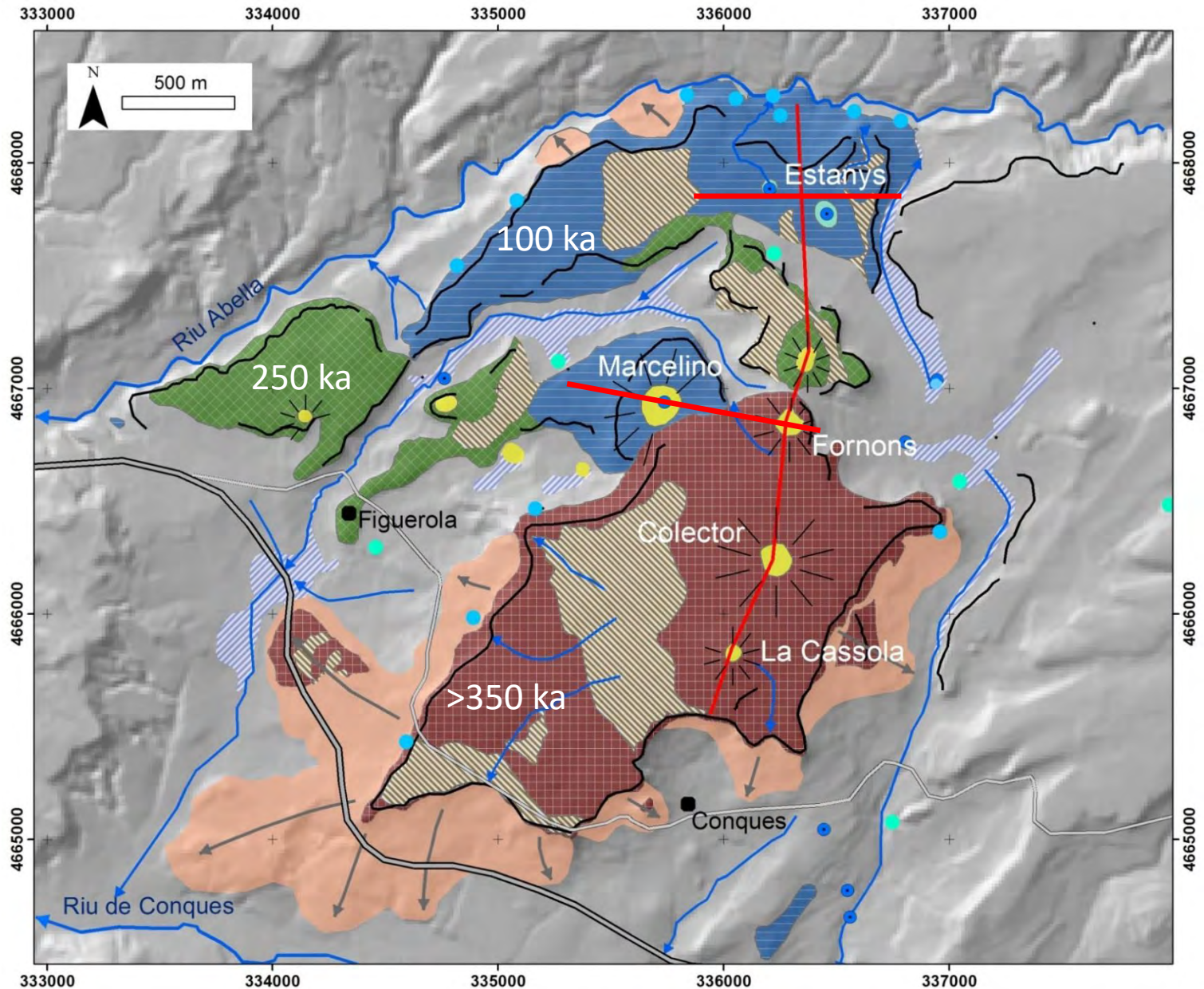


# Mètodes d'estudi

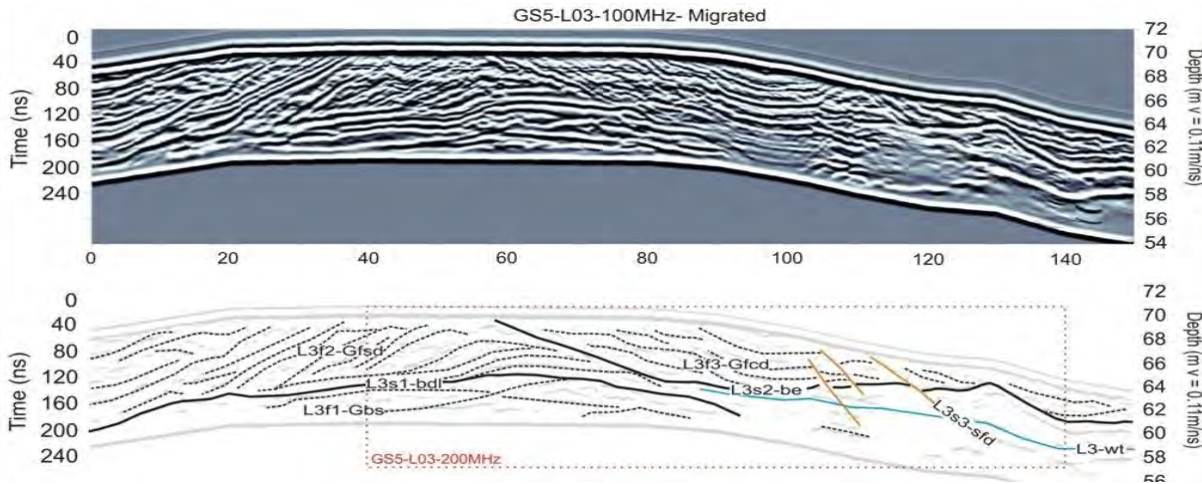
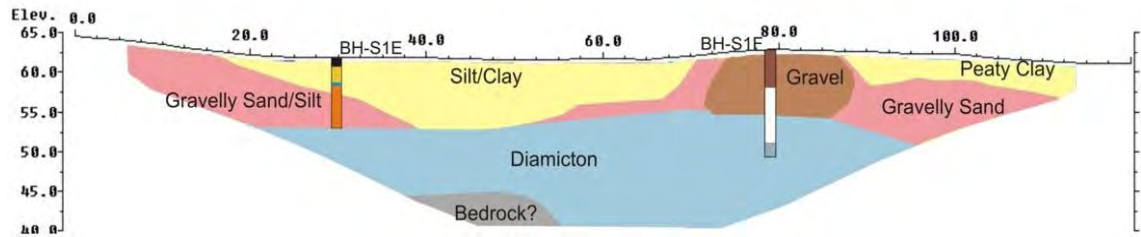
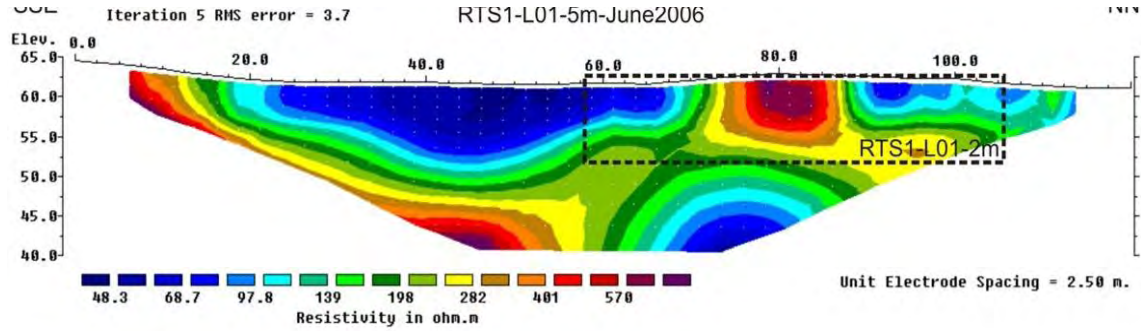
- Mapa geomorfològic
- Resistivitat elèctrica
- Georadar (GPR)
- Trinxeres



# Mapa geomorfològic i datació



# Radiografies del subsòl

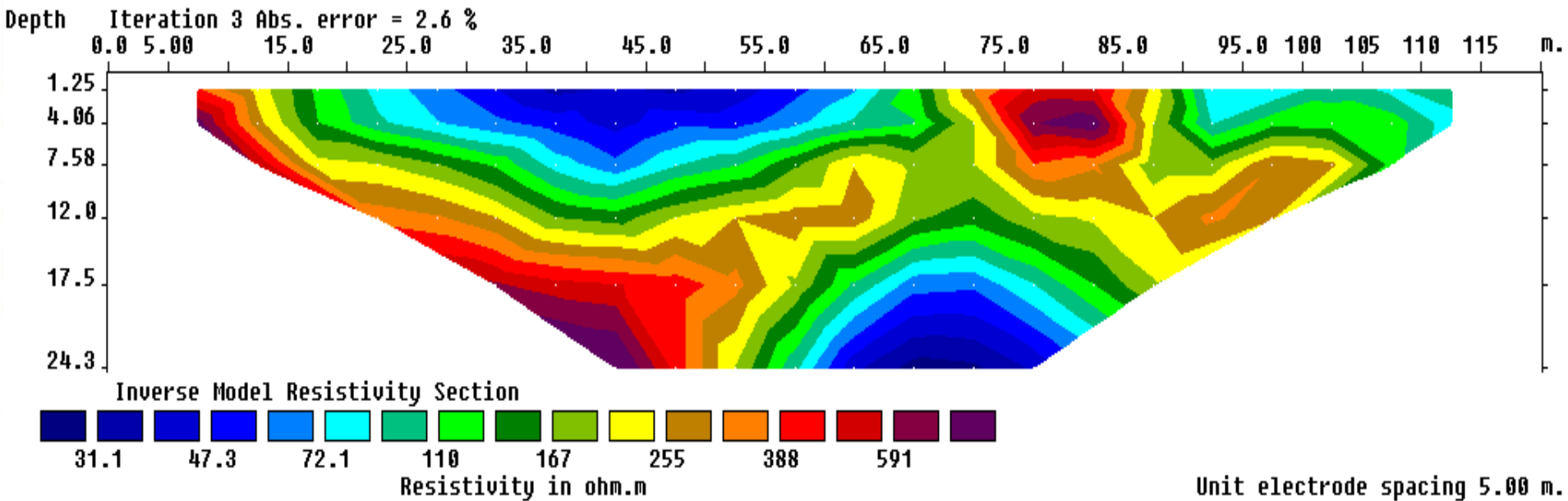


# Resistivitat elèctrica



Resistivity Meter

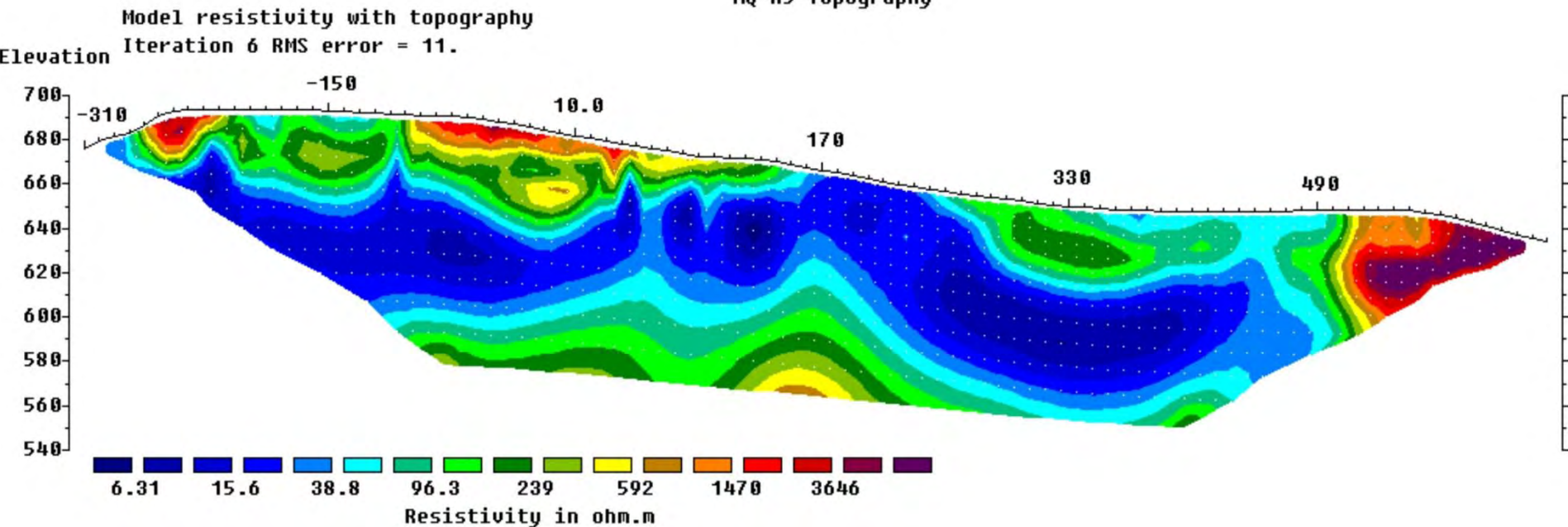
Computer



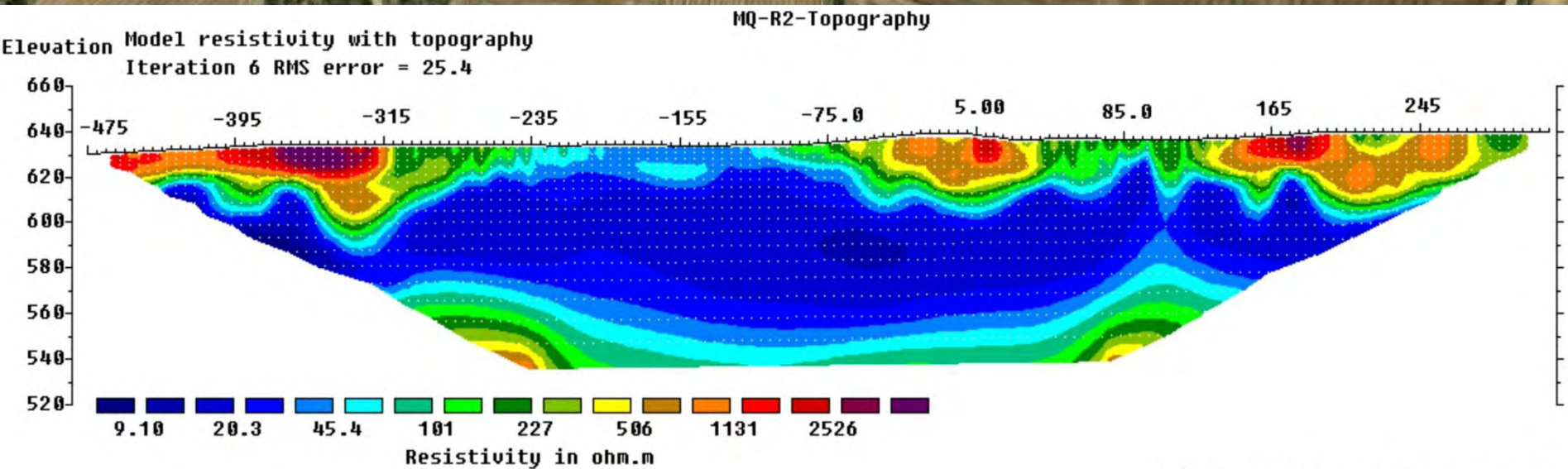
# Fornons i Estany del Marcelí



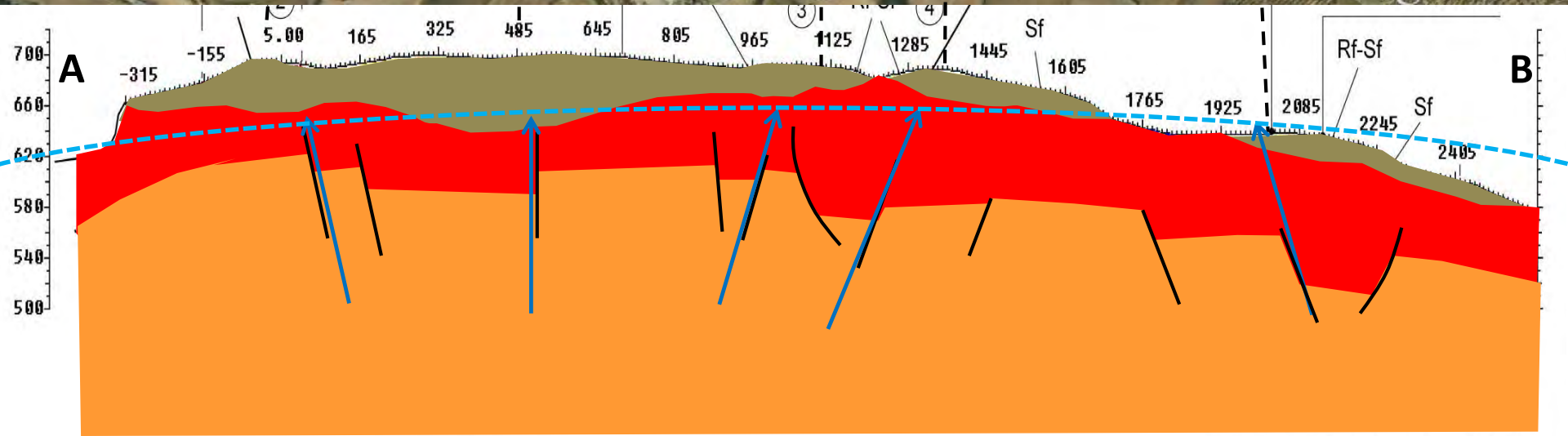
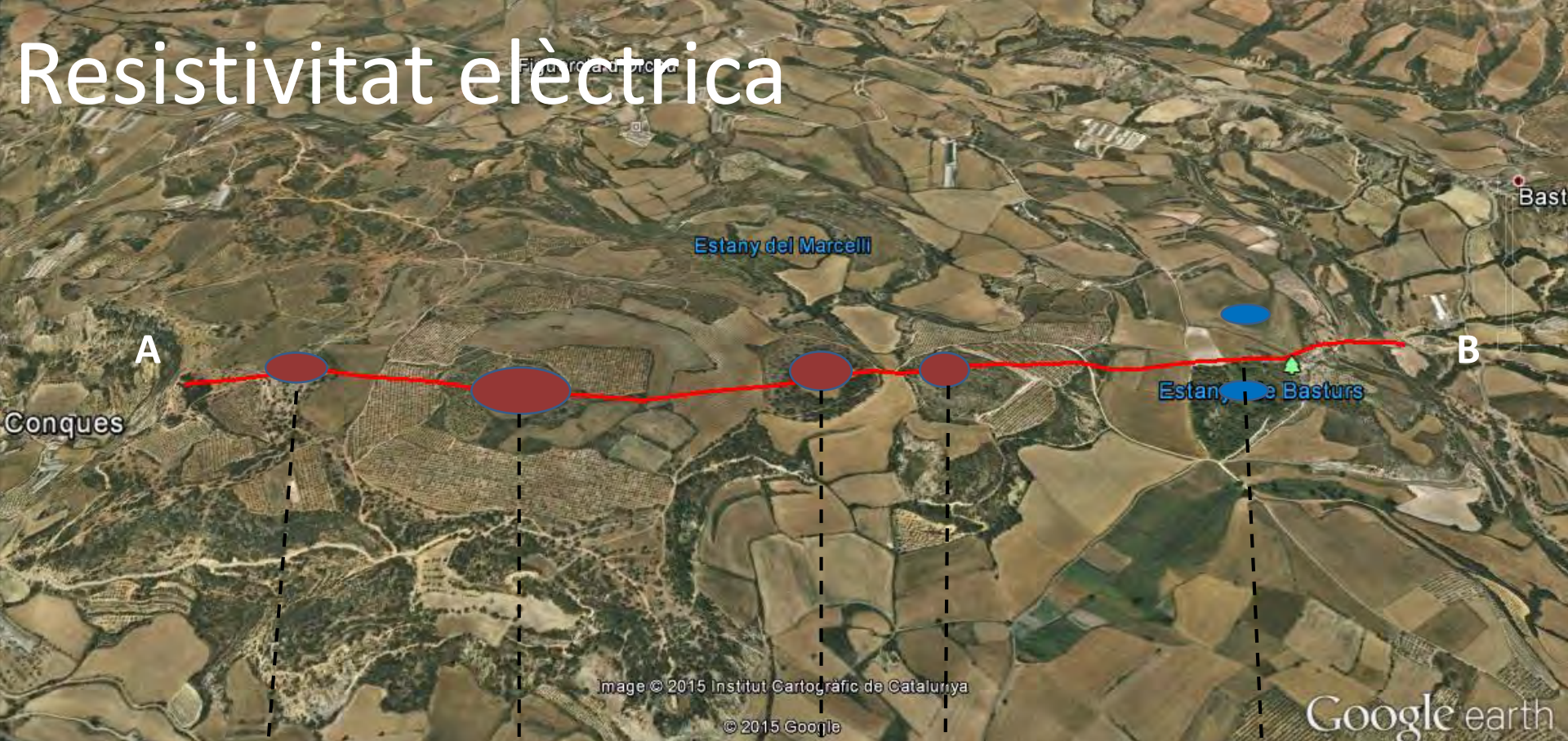
MQ-R5-Topography



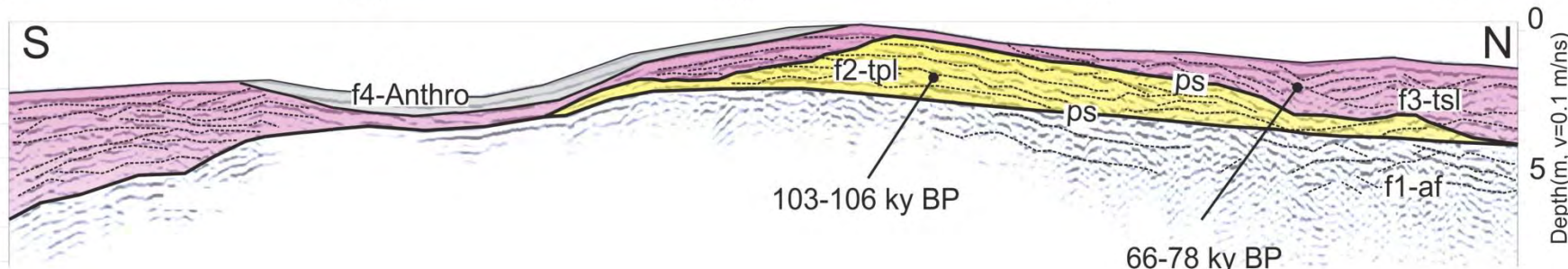
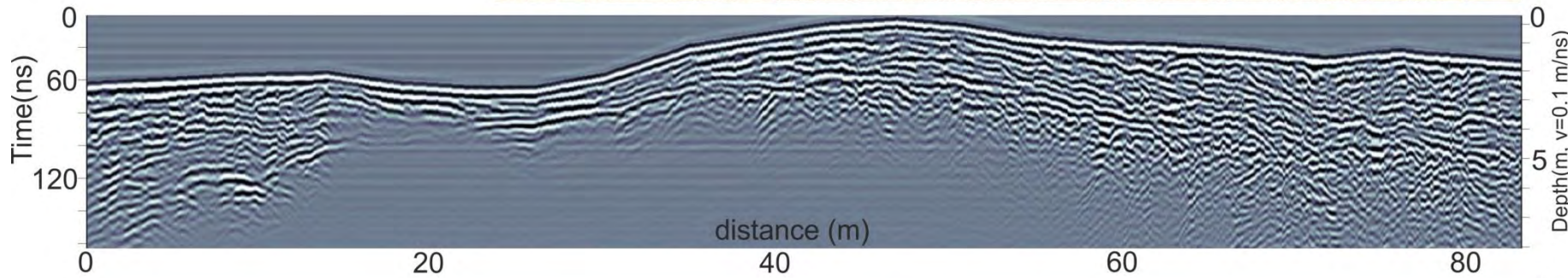
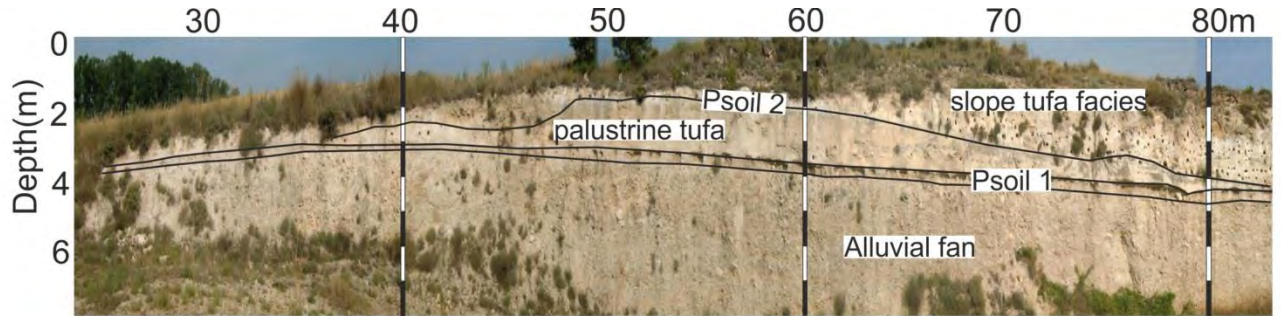
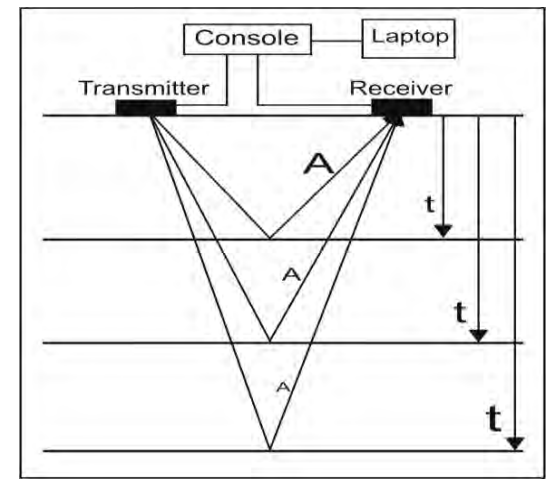
# Estanys de Basturs



# Resistivitat elèctrica

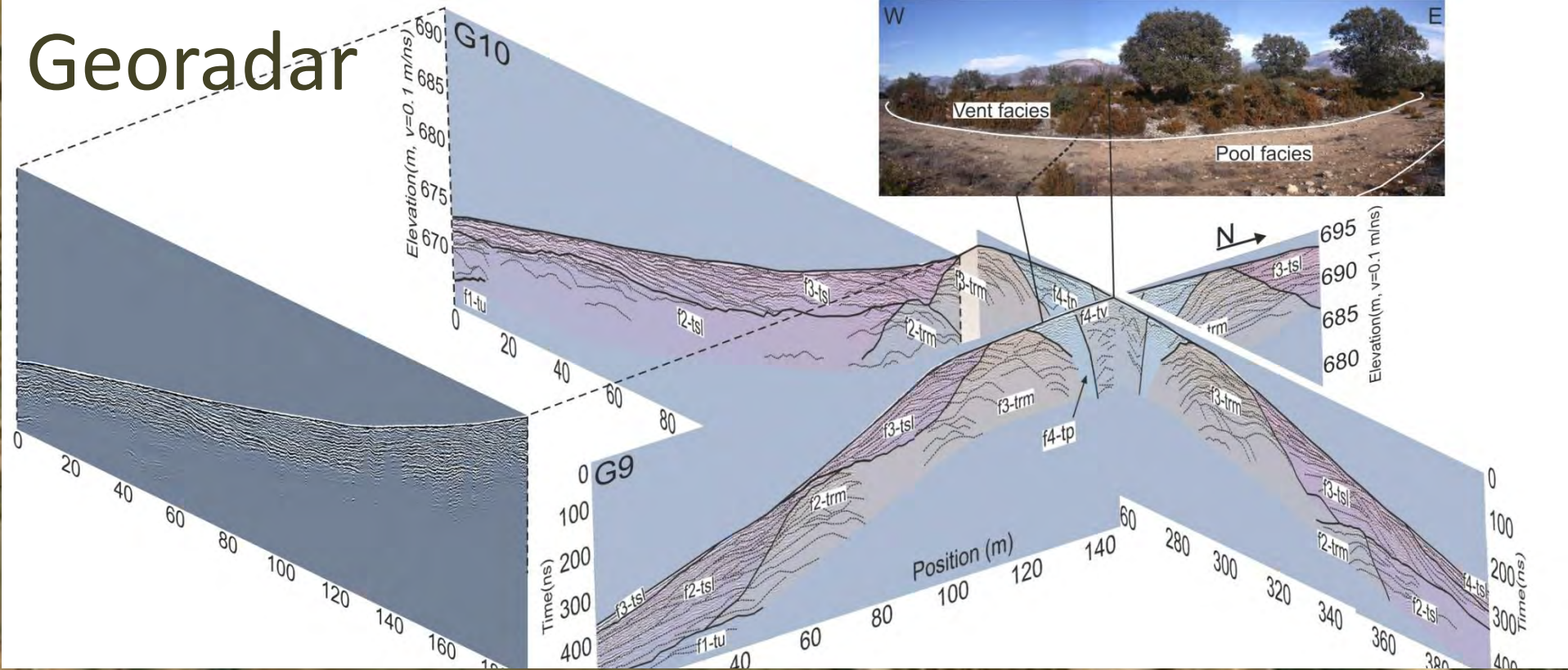


# Georadar

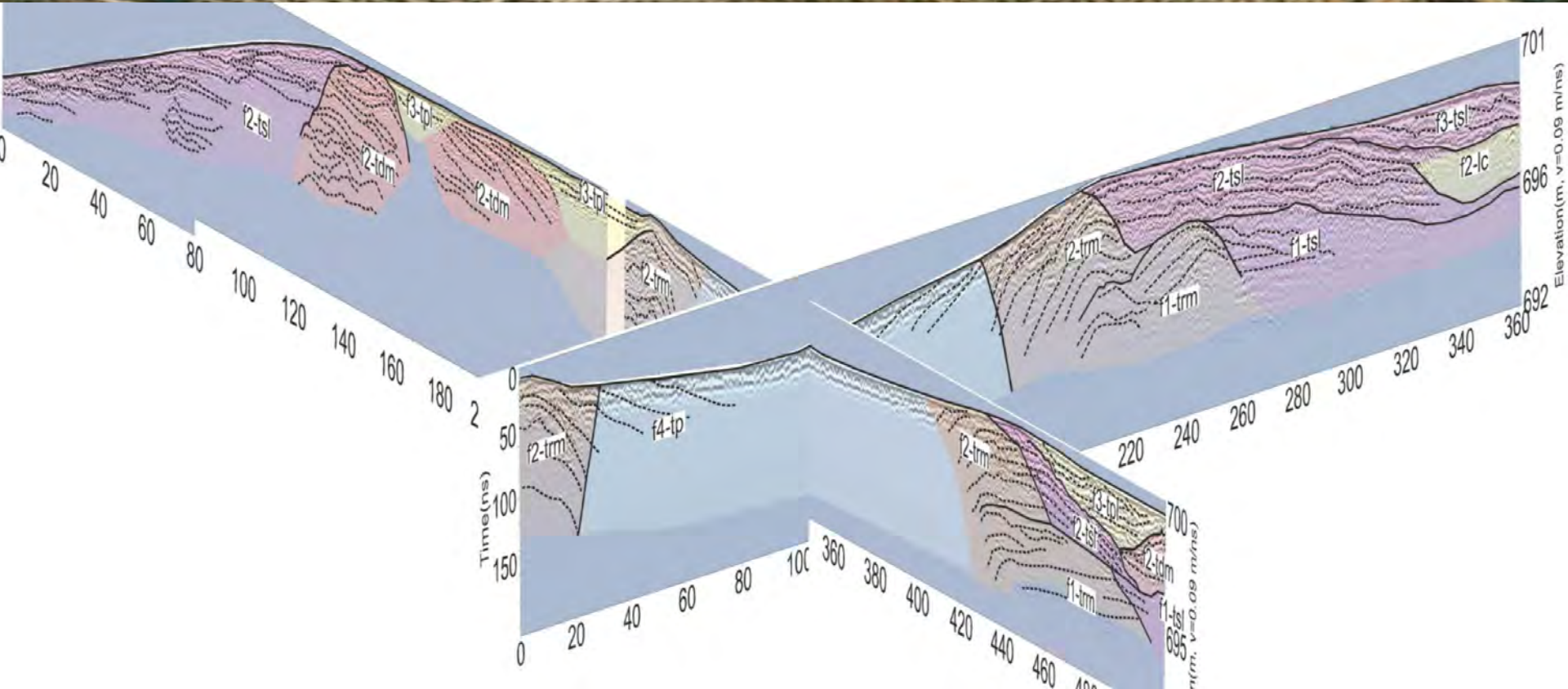




# Georadar



# Georadar



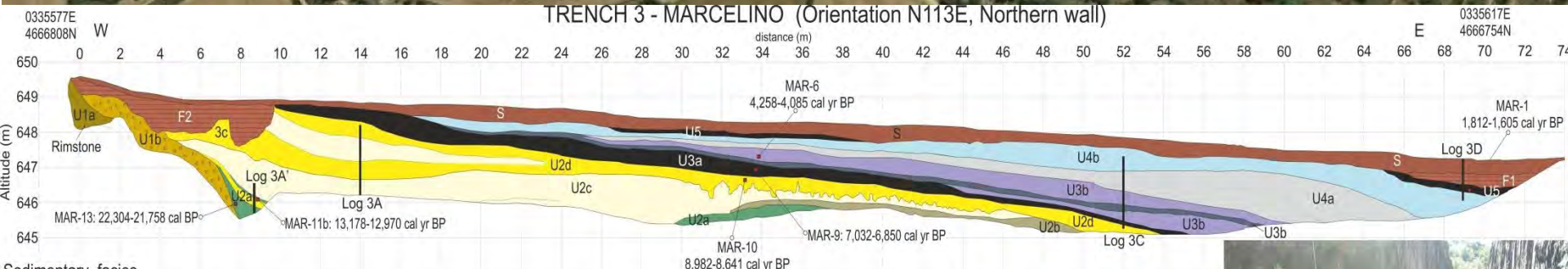
# Trinxeres



# Trinxeres

Estans de Basturs

Estany del Marcelli



## Sedimentary facies

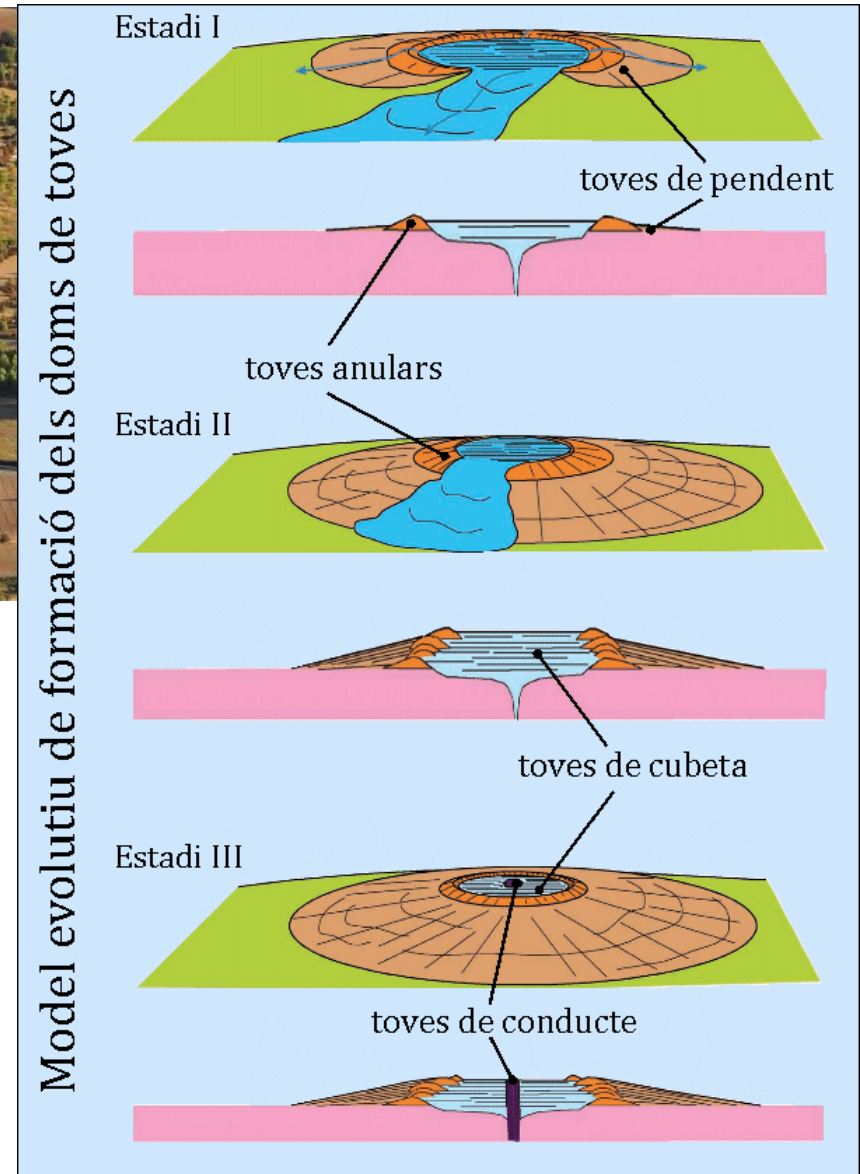
- Facies A1** Crudely-bedded indurated carbonate with mm-sized clasts and cemented matrix (Rimstone)
- Facies A2** Breccia with sandy silty matrix related to rimstone erosion (Colluvial)
- Facies B** Massive, bioturbated greenish brown/grey silty clay/clayey silt (Aeolian/Colluvial)
- Facies C1** Massive white carbonate silt with hints of bioturbation (Palustrine)
- Facies C2** Massive carbonate (sandy/clayey) silt with abundant charophytes, gastropods, bioturbation, secondary carbonate nodules and granule-sized intraclasts (Palustrine)
- Facies C3** Massive, indurated, fractured limestone

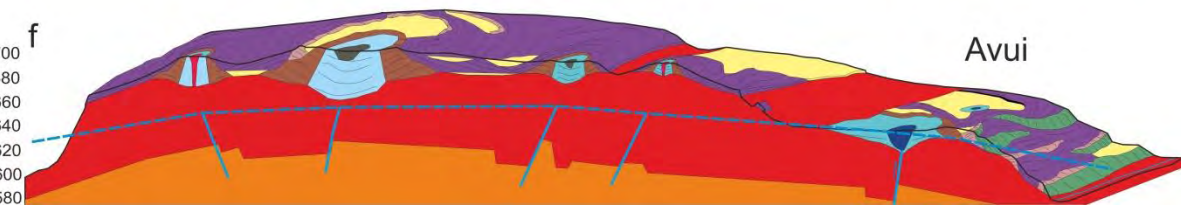
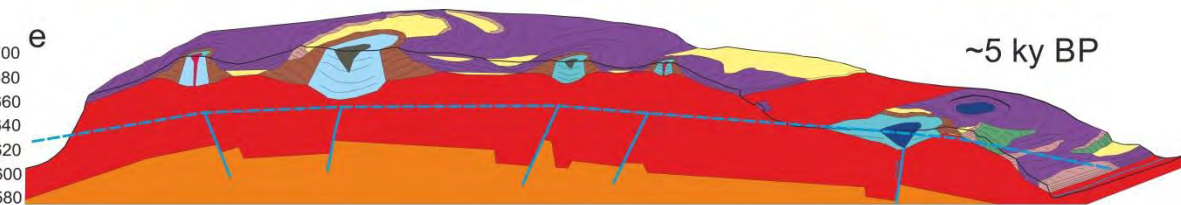
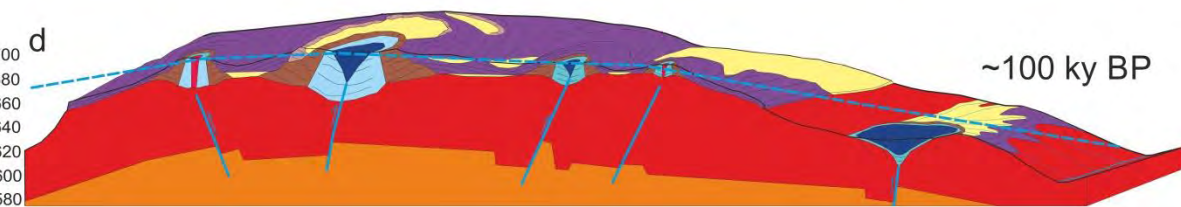
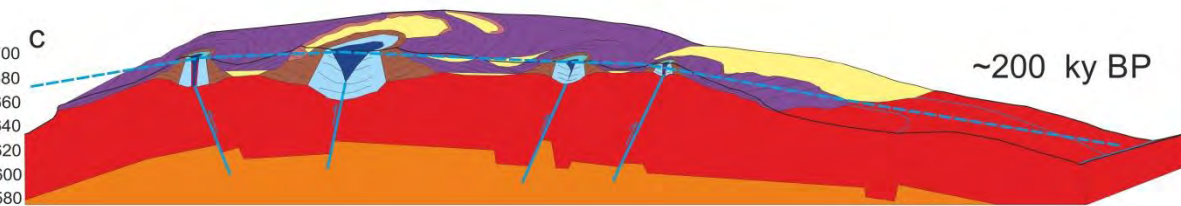
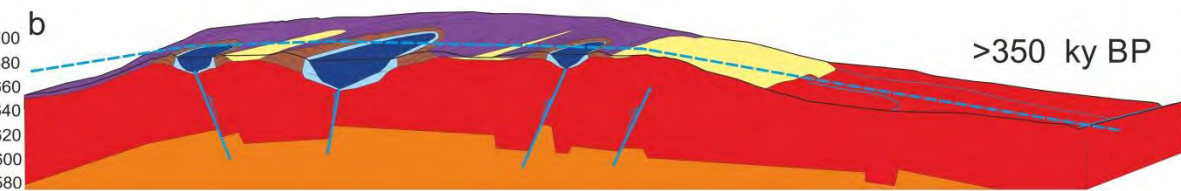
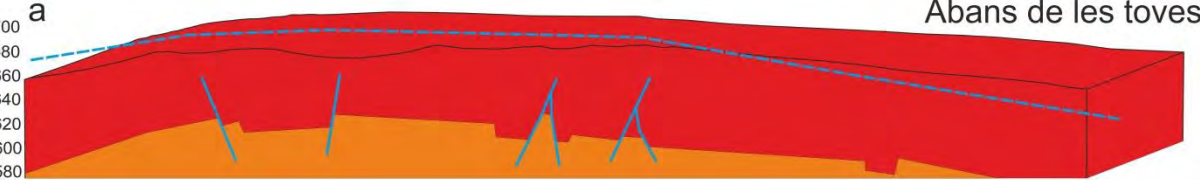
- Facies D** Massive highly bioturbated blackish organic ooze. Bioturbation cavities locally filled with secondary carbonate (Organic)
- Facies E1** Massive to banded blackish organic silt (Lacustrine carbonates slightly organic)
- Facies E2** Banded units with grey silt layers up to 10 cm thick and dark grey silt beds more than 3 cm thick. Overprinted by root bioturbation (Organic)
- Facies E3** Banded to laminated sandy silt composed of cm thick grey layers and cm-mm-thick dark organic layers (Organic)
- Facies E4** Massive grey silt with granules and bioturbation grading towards the lake center (68 m) to faintly laminated greyish and blackish silty layers (Organic)

## Stratigraphic units



# Com es formen els doms de tova





A - El sistema es compona d'un aqüífer càrstic fracturat confinat per una capa impermeable (en vermell).

B – Formació dels doms de toves del Mont de Conques.

C - Desenvolupament del Mont de Conques i erosió de les zones adjacents als rius Abella i Conques.

D – Naixement de l'Estany Gros. Mor l'Estany de la Cassola per obturació del conducte.

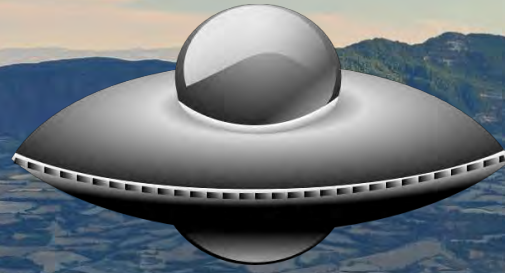
E – Naixement de l'Estany Xic, moren els Estanys del Mont de Conques.

F – Desenvolupament de dipòsits de cascada a la llera del riu Abella.

# Material per a la construcció



# El planeta Mart al Mont de Conques?





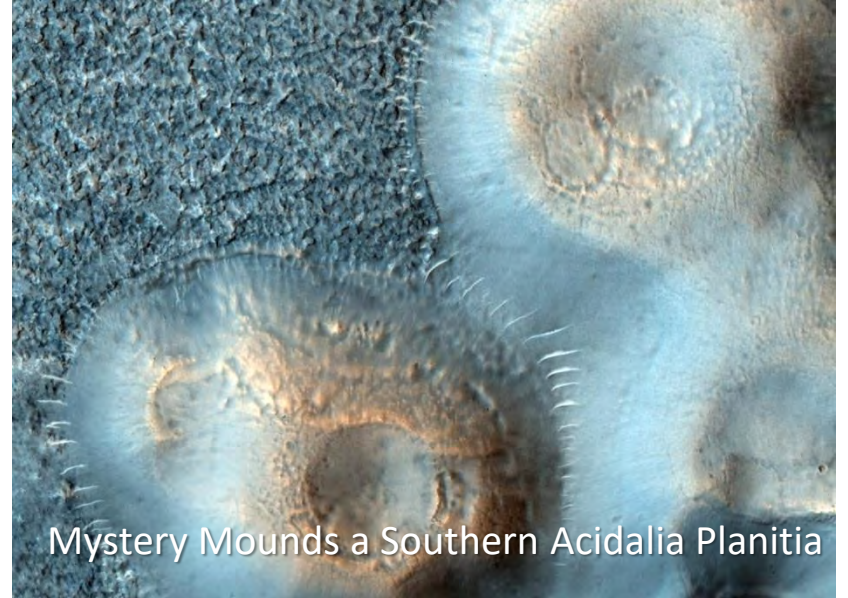
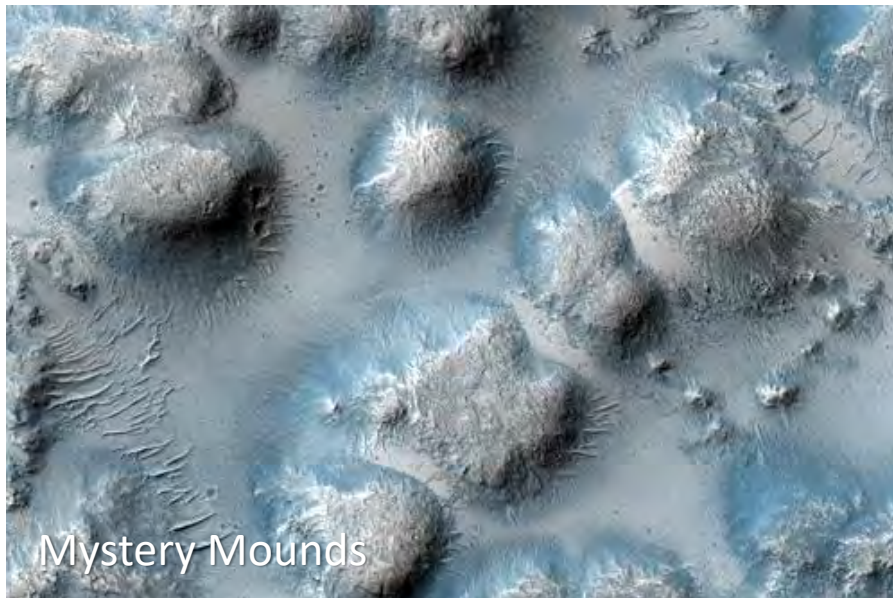
# Doms de toves al planeta Mart?



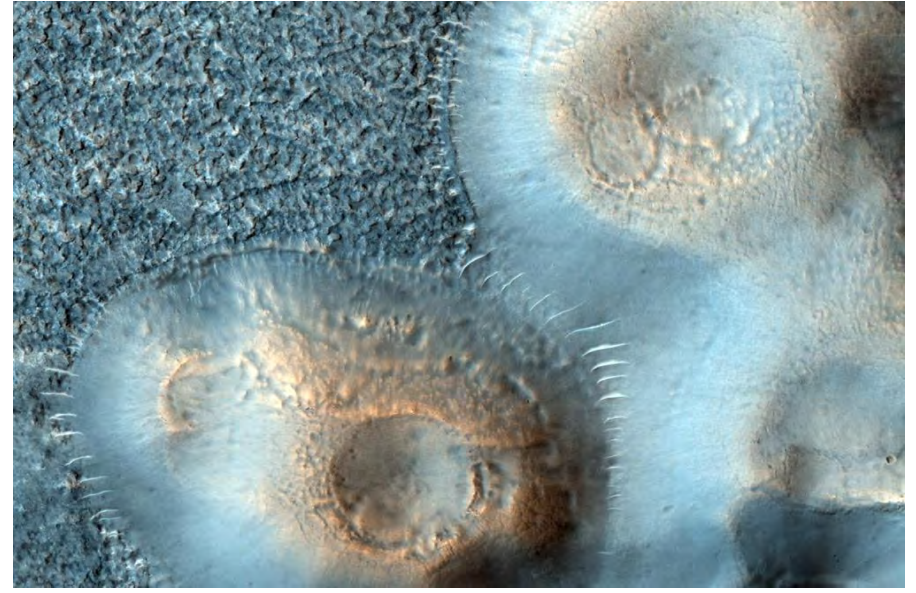
Utopia Planitia

Acidalia Planitia

# Doms de toves al planeta Mart?



# Dues possibles interpretacions



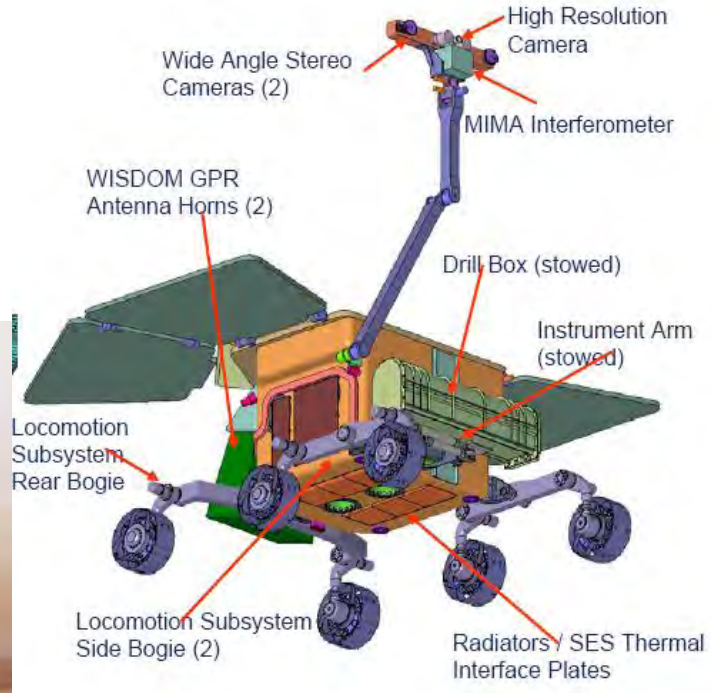
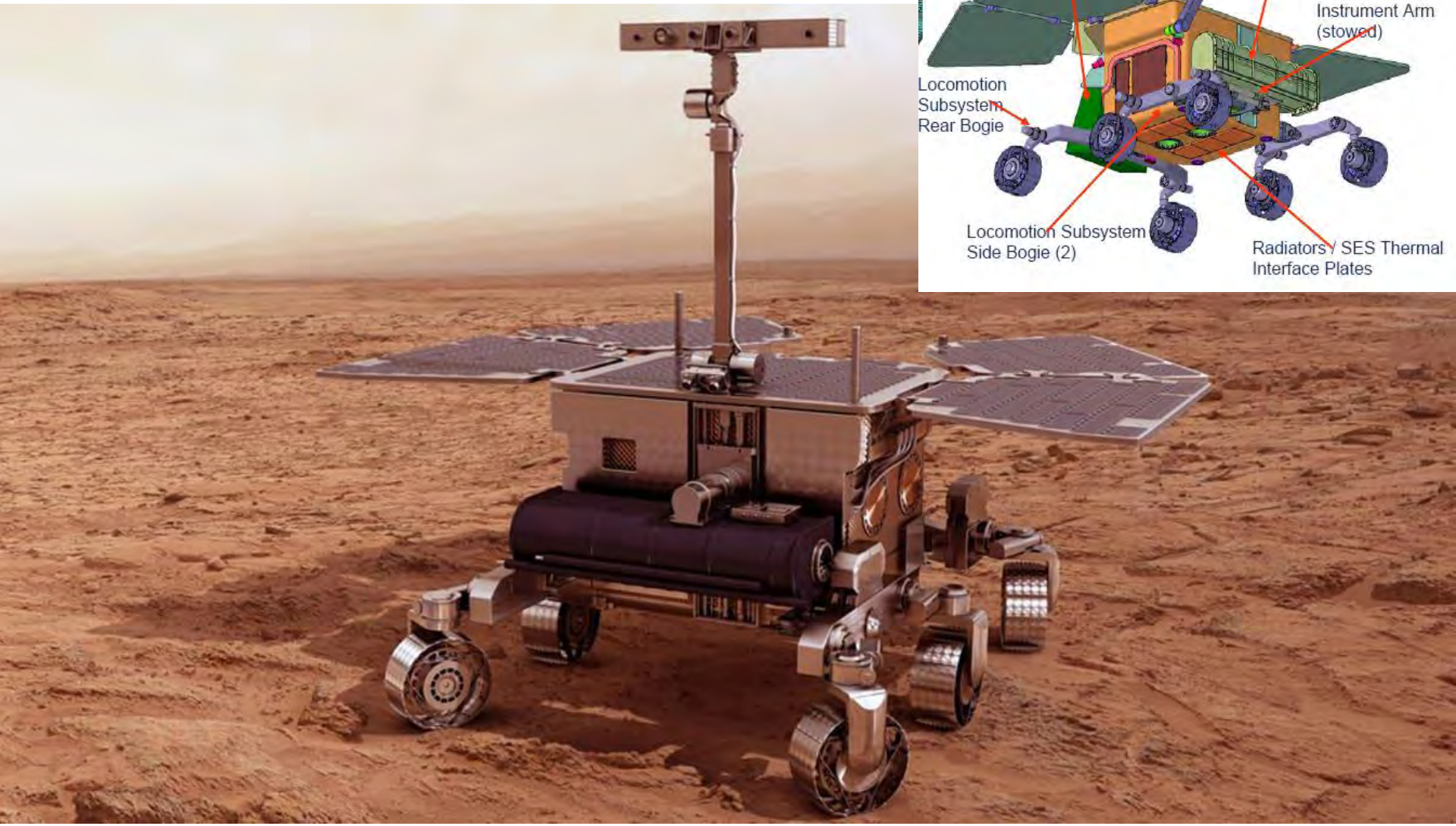
Volcans de fang?



Doms de toves?



# EXOMARS Rover



# Agraïments:

**Estació Biològica del Pallars Jussà**

**Ajuntament d'Isona i Conca Dellà**

**Museu d'Isona i Conca Dellà**

**Josep Maria Marc Olives**

**Josep Maria Fité**

**Jaume Abella**

**Maria Teresa Hom**

**Josep i Santi Coll**

**Rosa Ensenyat**

**Ramon Mir**

**Veronica Rodríguez**

**Angel Arantegui**

**Jordi Colom**

